

HAGFORS

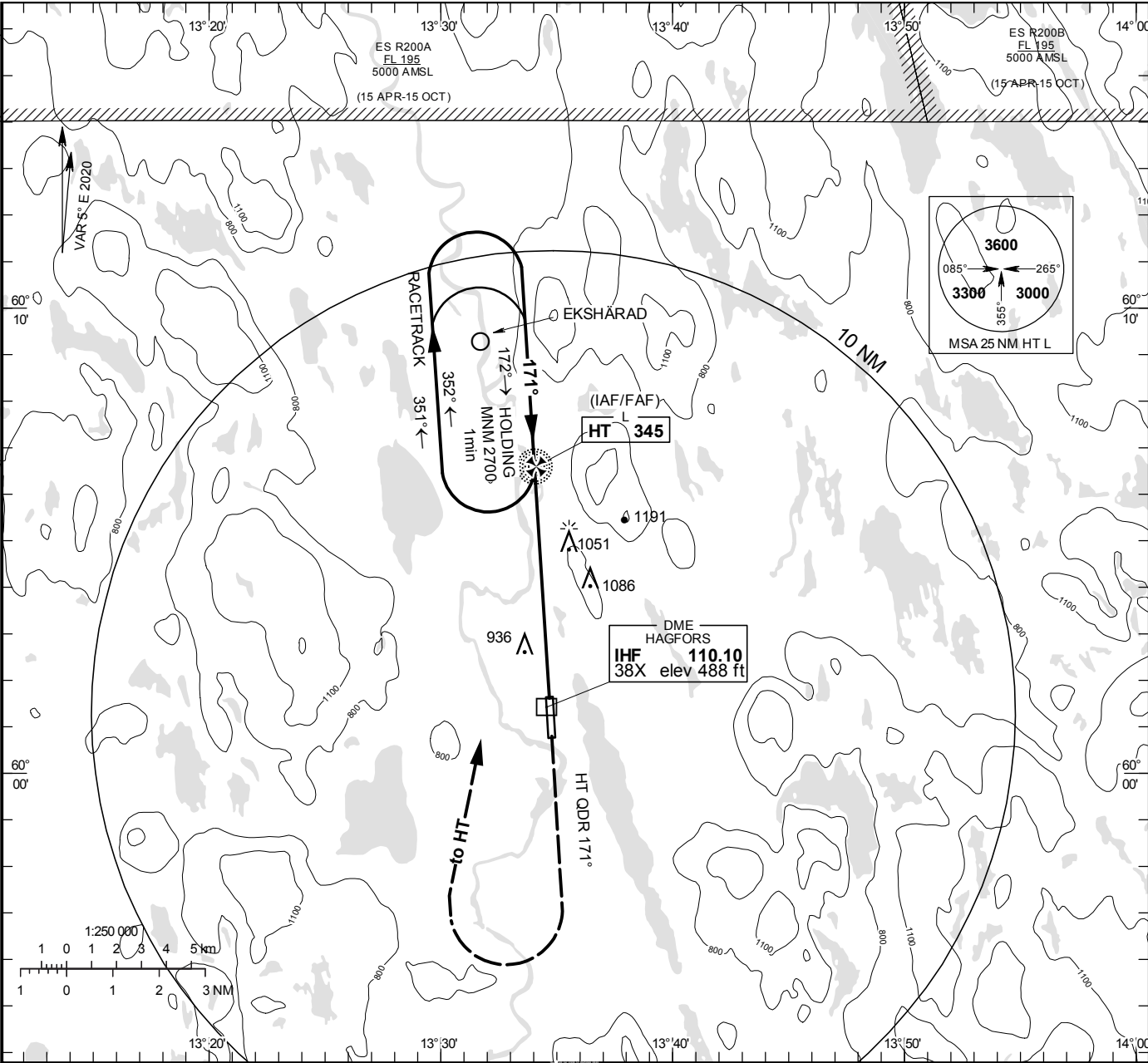
NDB RWY 18 (Cat A/B)

HAGFORS
INFORMATION

122.230

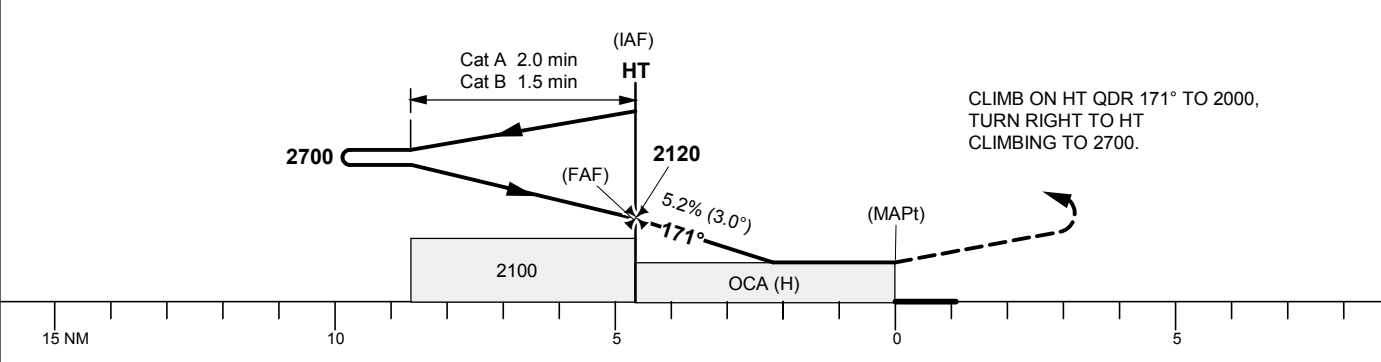
THR ELEV 474.3 ft, AD ELEV 474 ft
OCH are related to THR.
Circling OCH are related to AD ELEV.
BRG are MAG
ALT, HGT and ELEV in ft.

INSTRUMENT
APPROACH
CHART – ICAO



TA 5000 ft AMSL

Final APCH line offset 1°



OCA (H)			Final approach	Distance FAF-MAPt 5.0 NM				
Cat of ACFT	A	B	DME IHF NM	5		4		3
Straight-in Approach	1300 (830)		ALT	2060		1740		1420
Circling	1300 (830)	1390 (920)	GS	kt	80	100	120	140
			Time	min:s	3:45	3:00	2:30	2:08
			Rate of descent	ft/min	425	530	635	745

CHANGE: Editorial